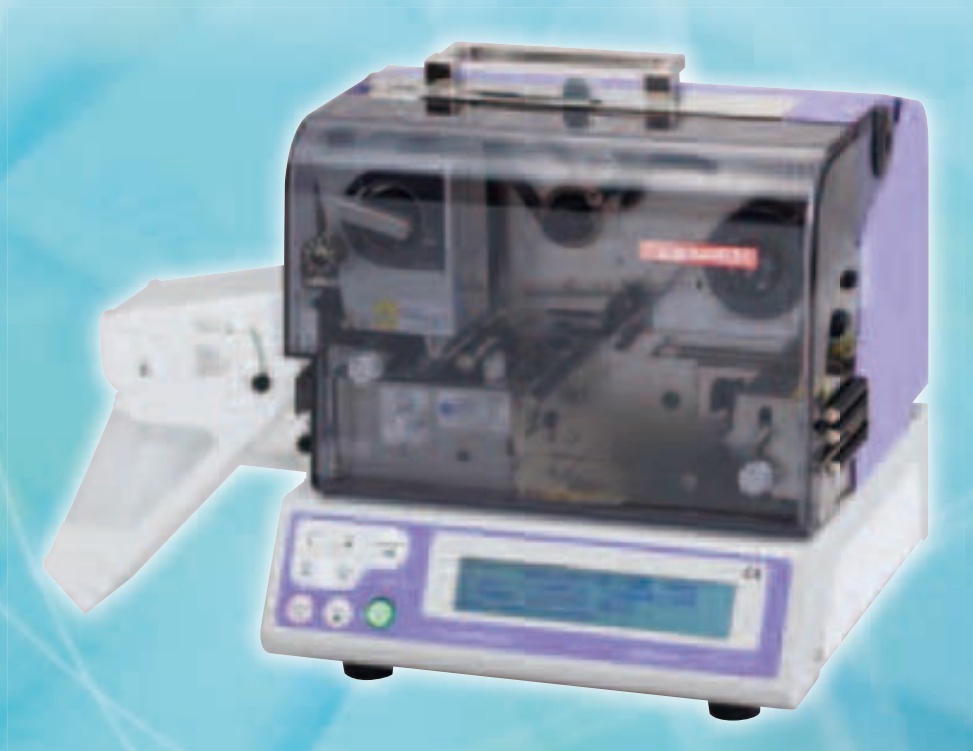


HOTMARKER®

SP6600

AUTOMATIC MARKING MACHINE FOR
TUBE, MARKER LABEL & TERMINAL ID BOARD



CE

CTK CORPORATION

HOTMARKER®

SP6600 Thermal transfer printer for cable and wire identifications

Industries served

Our Hotmarkers have been widely used for cable identifications across many manufacturing industries including:

- Control panels / Switchgear
- Wire harnesses
- Industrial installations
- Heavy electrical machinery
- Aircraft / Shipbuilding
- Railway vehicle / Automobile



Key features

You can produce different kinds of cable marker sleeves effectively, as you need. SP6600 can automatically mark and cut various types of tubes.

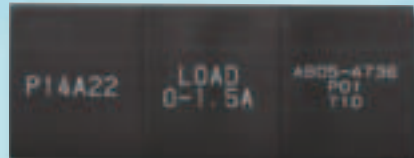
Applicable tube size:

Outside Diameter: 2.0~28.0 mm

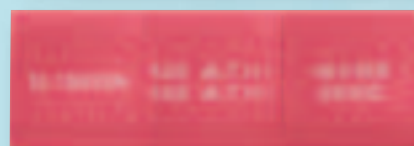
Laid-flat width: 3.2~45.0 mm

Marked samples
(heat shrink tubes)

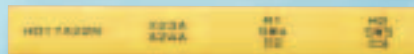
Width
(approx.)



40mm



30mm

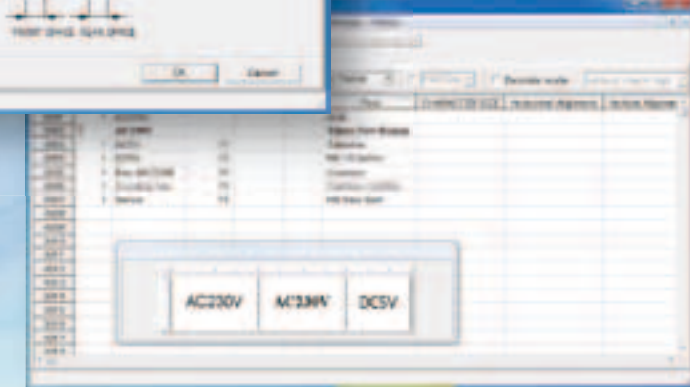
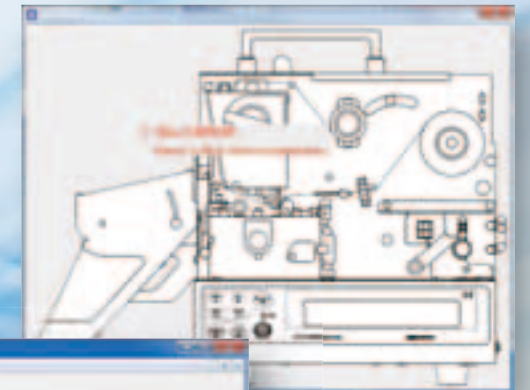


15mm

PC-link function

Bundled software "CTKPCMS" enables you to:

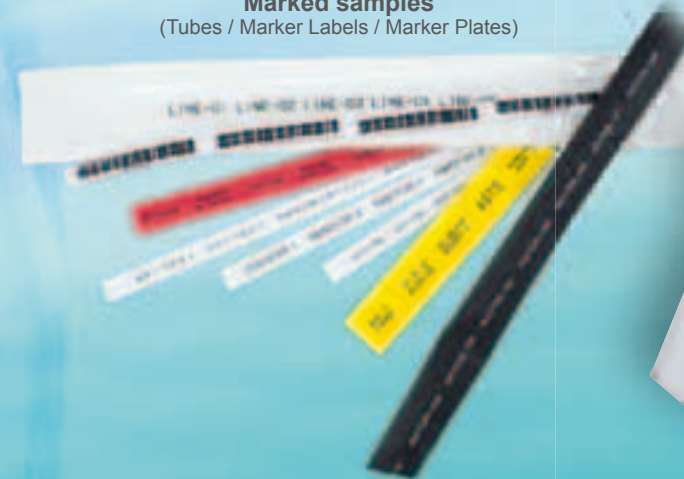
- Handle marking data efficiently with on-screen previews and error windows.
- Utilize Windows' TrueType fonts for marking native characters, etc.
- Print Code 39 barcodes.



Stand-alone use

Optional keyboard allows stand-alone operation through menu screen on the LCD.

Marked samples
(Tubes / Marker Labels / Marker Plates)



*Keyboard is available at extra cost.

SP6600 MAIN SPECIFICATIONS

● MAIN UNIT

MARKING SYSTEM		Thermal head type	
MODEL OF THERMAL HEAD		TPH933	
APPLICATIONS	PVC tubes	O.D. 2.0 mm through 28.0 mm	
	Heat shrink tubes	Laid-flat width up to 45 mm (approx.)	
	Marker Labels	Precut type (TW-17(R6), etc.)	
		Long type (PETS0699, etc.)	
terminal ID boards	"HOTMARKER" brand of Marker Plates of various sizes		
FONT STYLE		CTK original fonts	
STANDARD FONTS	CHARACTER SIZE AND ORIENTATION	2.4 x 2.4mm (HOR/VER) 1.8 x 1.8mm (HOR/VER)	
		2.4 x 1.2mm (HOR/VER) 1.8 x 0.9mm (HOR/VER)	
		3.0 x 2.4mm (HOR/VER) 2.0 x 1.2mm (HOR/VER)	
		5.0 x 3.0mm (HOR) 2.7 x 1.2mm (HOR)	
CHARACTERS INCLUDED*1	Numerals 0 - 9 Modern alphabet letters Capital: A - Z Lowercase: a - z Signs + - / . etc.		
SPECIAL FONTS	1	CHARACTER SIZE	2.4 x 2.4mm (HOR) 3.0 x 2.4mm (HOR)
		KIND OF CHARACTERS	Ⓔ Ⓕ Ⓖ Ⓗ Ⓙ Ⓚ Ⓛ Ⓜ Ⓝ (underscore) preinstalled
	2	CHARACTER SIZE	4.0mm/5.0mm/5.5mm*2
		KIND OF CHARACTERS	Ⓔ Ⓕ Ⓖ Ⓗ Ⓙ Ⓚ Ⓛ Ⓜ Ⓝ (underscore) preinstalled
NUMBERING FUNCTION		Automatic 4-digit decimal & hexadecimal numbering possible per text in ascending & descending order.	
DATA DISPLAY		LCD with white backlight (40 digits x 4 lines)	
INTERFACE		USB x 1	
DATA STORAGE		Max. 1,000 lines in main memory & Max 1,000 lines/bank x 8 banks in extended memory	
PRODUCTION CAPACITY		About 4,500 pcs. per hour (under TUBE mode, 5 digits x 1 line marking on 20mm-long tubes)	
POWER SOURCE		110 - 240VAC, 50/60Hz	
DIMENSIONS		440(W) x 280(D) x 305(H) mm	
WEIGHT		12.5 kgs	

*1 Kinds of characters included may change depending on the character size & orientation.
*2 3 different sizes of characters are included in one font area.

● SOFTWARE (CTKPCMS for Windows for SP6600)

Required specs for PC	Operating system (OS)	Windows Vista (32-bit) / 7 / 8
	Hardware	PC having features recommended by each OS and equipped with USB port.
	RAM	Min. capacity recommended by each OS or above.
	Hard disc drive	Min. capacity recommended by each OS or above.
Barcode marking functions	Symbology	Compatible with Code 39
	Character size	40 points and larger recommended
	Check digits	Modulo 43 check digits can be appended.
	Recommended applications	PVC tubes of O.D. 4.0mm & larger (for marking barcodes only), Marker Labels & Marker Plates.

● CONSUMABLES

■ Marking Foils

Ref.	Width (mm)	Length (M)	Color	Applications
S611-20	20	200	Black	PVC tubes Marker Labels Terminal ID boards
S625-20	20	200	White	
S619-20	20	200	Black	Polyolefin heat shrink tubes
S629-20	20	100	White	

■ Marker Labels (RoHS-compliant adhesive labels)

Size of each label (mm)	PVC	PET ("est" brand)	
	White	White	Silver
6 x 17	TW-17(R6)	PETW0617	PETS0617
6 x 20	TW-20(R6)	PETW0620	PETS0620
6 x 23	TW-23(R6)	PETW0623	PETS0623
6 x long type	LW-100(R6)	PETW0699	PETS0699

■ Marker Plates (Terminal ID boards)

High quality & smooth surface for best printing results.
Packed in dust-protective transparent jacket.

Ref.	Width (mm)	Length (M)	Color
MP-80-25	8.0	25	White
MP-85-25	8.5	25	White
MP-95-25	9.5	25	White
MP-100-25	10.0	25	White

■ PVC tubes

Hotmarker brand of genuine PVC tubes.
Most suitable to obtain legible printings with Hotmarkers.

● OPTIONAL PARTS

The following accessories are available at extra cost.

■ English keyboard

For stand-alone operation

■ Tube holder C-3

Floor-type tube holder

■ Tube holder TH400

Space-saving tube holder for constant supply of tube

■ Tube reel set

For using different sizes of tubes with C-3 / TH400

■ Carrying case

Allows for storage of SP6600 complete set
Useful to carry from site to site



PRECAUTIONS TO ENSURE SAFETY



Before using the machine, be sure to read the instruction manuals and understand the proper usage of the machine.

"Windows" is a trademark of Microsoft Corporation. Actual color of the products may look slightly different to the photographs in this leaflet
The information contained in this leaflet, specifications and external appearance of products are subject to change without notice.



HOTMARKER®

MANUFACTURER
CTK CORPORATION

1-7-17, Kandaizumi-cho,
Chiyoda-ku, Tokyo 101-0024
Japan

Tel: +81-3-3861-5610

Fax: +81-3-3861-5880

http://www.hotmarker.co.jp

Printed in Japan

1059